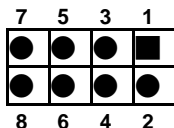


SPE-4S-R10

4-Slot PICMG 1.3 PCIe Backplane User Manual Ver. 1.02

1. USB1, USB2: External 4 Port USB Connectors From the Mainboard



USB1、USB2			
PIN	DESCRIPTION	PIN	DESCRIPTION
1	USBVCC	2	GND
3	DATA-	4	DATA+
5	DATA+	6	DATA-
7	GND	8	USBVCC

2. FAN1, FAN2, FAN3, FAN4: Fan Connector



PIN	DESCRIPTION
1	GND
2	+12V
3	NC

3. ATXCTL1: Backplane to Mainboard ATX Power Control Connector



PIN	DESCRIPTION
1	GND
2	PSON#
3	5VSB

4. PWRBTN: External Power On Button



PIN	DESCRIPTION
1	GND
2	PWRBT#

5. RESET: External Reset Button Connector



PIN	DESCRIPTION
1	GND
2	SHB_RST#

6. PWRGD: External Power Good Connector



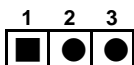
PIN	DESCRIPTION
1	GND
2	PWRGD

7. SM-BUS: External System Management BUS Connector



PIN	DESCRIPTION
1	SMDATA
2	SMBCLK

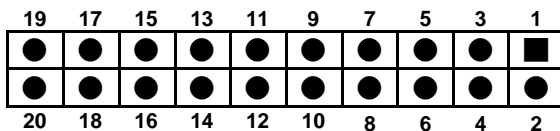
8. CN2: PCIE X8 SDVO Control Signal Pin



PIN	DESCRIPTION
1	EXP_EN
2	SDVO_CLK
3	SDVO_DAT

9. ATX PWR1: The ATX Power Connector indicators for controlling your CPU board.

PIN NO.	DESCRIPTION	PIN NO.	DESCRIPTION
1	GND	2	-12V
3	+12V	4	GND
5	IPMB_DA	6	5VSB
7	GND	8	GND
9	IPMB_CL	10	5VSB
11	+5V	12	PWRGD
13	SMDAT	14	SHB_RST#
15	5VSB	16	GND
17	SMCLK	18	PSOEN#
19	+3.3V	20	PWRBTT#

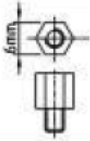


10. 12V1: ATX-12V CPU Power Input connector

PIN NO.	DESCRIPTION	PIN NO.	DESCRIPTION
1	GND	2	GND
3	+12V	4	+12V

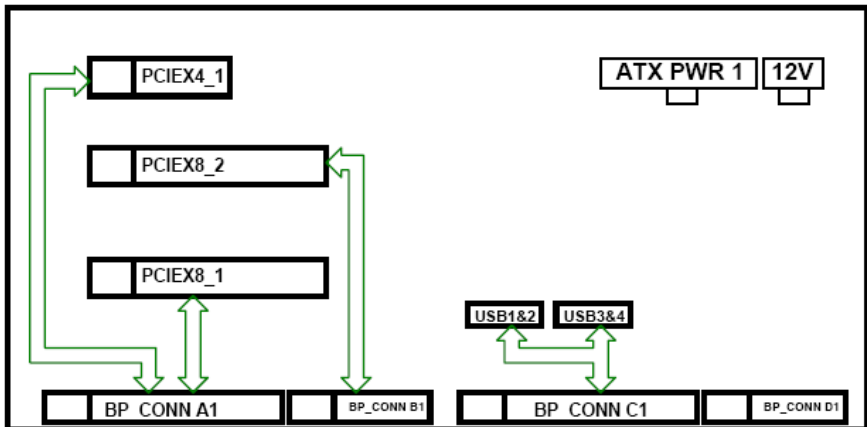
11. Notice:

- a. Recommend to use 6mm width spacer to install



- b. Torsion must less than 6lb-inch

12. Block Diagram



13. Dimension:

